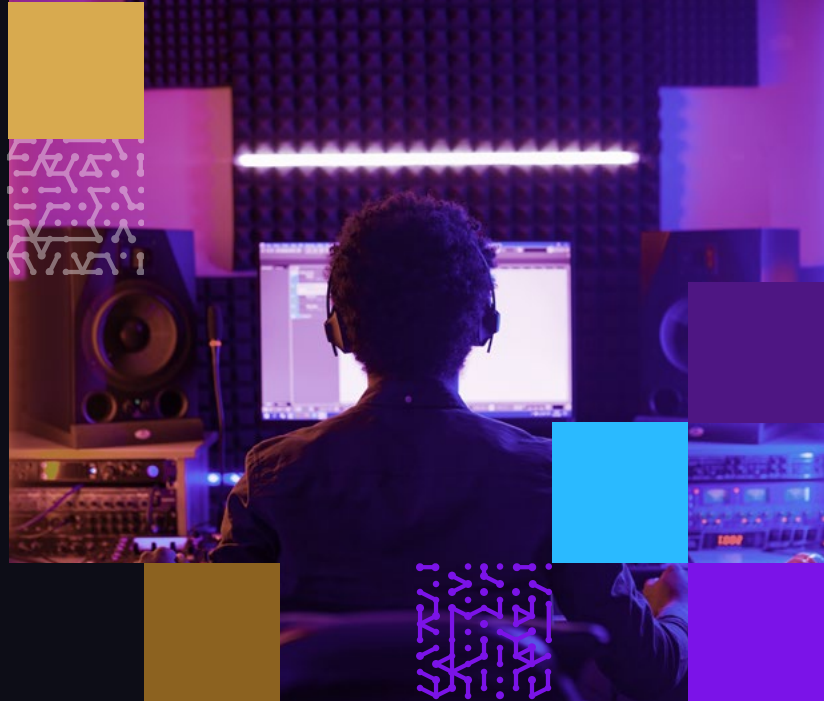




CASE STUDY

Pioneering Audio-Visual Experience Company Embraces the Armis Advantage to Support Secure Innovation and Operations



The Challenge

- Ensuring comprehensive network security while maintaining operational efficiency and resilience
- Identifying and managing rogue devices
- Integrating multiple disparate security and operational platforms for a unified view

The Solution

- Implement Armis Centrix™ for Asset Management and Security
- Implemented 15+ integrations with existing security technology

The Results

- Armis protects the entire attack surface and manages the organization's cyber risk exposure in real time
- Identified rogue devices, including wireless routers
- Pinpointed anomalous behavior in network devices, leading to swift resolution of misconfigurations
- Enhanced network security while ensuring minimal disruption to R&D and operations
- Dramatically improved operational efficiency and MTTR

Industry: **Electronics**

Location: **Israel**

Size: **500 employees**



Armis Centrix™ Asset Management and Security

Based in Israel, this audio-visual experience company has long been at the forefront of its industry. With a presence in over 100 countries and a dedicated team of almost 500 employees, the company is renowned for its innovative solutions that drive collaboration and engagement across various sectors, from enterprises to educational institutions.

The Challenge

In an environment that relies on digital connectivity, the company faced mounting security challenges. “Our R&D labs have extensive facilities, where developers frequently need to connect devices to our network for conducting tests. While fostering innovation, this requirement could pose risks”. The administrator further explained that locating unacceptable devices could potentially consume a lot of time and resources. Sometimes, it could even require the physical disassembly of unmanaged 48-port switches to locate rogue routers.

“I have surprised my boss on several occasions with how quickly I could get the information she was looking for. It’s a given that, when I use Armis, I will get results faster than going to each individual data source because Armis knows how to put it all together so well.”

Systems Administrator

The Solution

To ensure that the company’s network was both secure and conducive to innovation, he deployed Armis Centrix™ for Asset Management and Security “Armis not only provides unparalleled visibility, it integrates with our existing tools to enhance our ability to detect and respond to security incidents. Armis has become indispensable.” the system administrator remarked.

Now, when the company faces the daunting task of discovering a rogue router, Armis swiftly and efficiently comes to the rescue. Previously, such a task took up to two days. With Armis, the unmanaged device is identified in just 30 minutes.

The Results

A transformative moment that spotlights the precision of Armis came when it pinpointed anomalous bandwidth usage by a standard network printer server. Since the company manufactures and distributes audio-visual hardware as well as software, it has an elaborate system that integrates ordering, inventory, and shipping label generation. The company relies on high-speed printers to produce shipping labels for its products—often churning out tens of thousands of labels in just minutes. The system administrator recalls a time when the shipping department voiced complaints about slow printer performance. With the help of Armis, he discovered that a printer server was transmitting uncharacteristically large amounts of data—hundreds and hundreds of megabytes of traffic—for no apparent reason, bombarding endpoints and other devices with network traffic.

“We were surprised when Armis alerted us about this seemingly innocuous device,” the system administrator recalled. “But what impressed us was its ability to not just detect the anomaly, but also provide context. It turned out the printer had a misconfigured update setting that was hogging bandwidth. Without Armis, this would have remained an unresolved mystery, potentially disrupting our shipping operations.”

Beyond the rapid detection of rogue devices and a contextualized understanding of assets and their behavior on the network, the value of Armis lies in its seamless integration capabilities. So far, the company has completed 15 to 18 integrations with Armis.

Armis Centrix™ feeds the critical insights it collects into these integrated tools, providing an in-depth, holistic view of the company’s entire network to help pinpoint and prioritize risk. This broad and deep level of integration has empowered the company with granular details about its network infrastructure, enhancing monitoring capabilities and security.

“Armis has saved us a lot of precious time, translating directly into operational savings. The ability of Armis to drill down and give us what we’re looking for is just phenomenal!”

Systems Administrator

According to the system administrator, “We can now monitor our network with a clarity we didn’t have before and create appropriate policies. Once a week, I pull a report from Armis to see which computers don’t have essential security solutions installed. I can then take action and remediate those systems.”

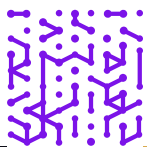
Armis also complements established compliance processes. “When we do penetration tests, I use Armis to provide data on what failed and why. With Armis, our penetration testing processes have become more robust, ensuring we’re always in compliance with industry standards,” he added.

The operational benefits of Armis are palpable. Beyond the time and monetary savings, there’s an enhanced sense of security and efficiency. The system administrator concluded, “The peace of mind we have knowing that our network is secure, without stifling R&D’s creativity, is invaluable.”

Because Armis provides both granular and big-picture visibility into disparate systems and supports multiple integrations, its value has become obvious to the company on a day-to-day basis.

“I have surprised my boss on several occasions with how quickly I could get the information she was looking for. It’s a given that, when I use Armis, I will get results faster than going to each individual data source because Armis knows how to put it all together so well,” he summarized.

Though still in the early stages of its journey, the company’s experience with Armis has been transformative. With enhanced network security, visibility, and operational efficiency, the company looks to the future with confidence. In the words of the company’s system administrator, “Our partnership with Armis has not only addressed our present challenges, but has also equipped us for what lies ahead.”



<30 min

Time to identification
of new devices

18

Integrations
implemented



Increased time
to results



Armis, the asset intelligence cybersecurity company, protects the entire attack surface and manages the organization’s cyber risk exposure in real time.

In a rapidly evolving, perimeter-less world Armis ensures that organizations continuously see, secure, protect and manage all critical assets.

Armis secures Fortune 100, 200 and 500 companies as well as national governments, state and local entities to help keep critical infrastructure, economies and society safe and secure 24/7.

Armis is a privately held company headquartered in California.

1.888.452.4011
www.armis.com

