



# Whole-of-State Cybersecurity with Armis Centrix™

Armis empowers state, local, education, and tribal leaders to achieve cyber resilience using Asset Exposure Management. Armis Centrix™ is FedRAMP Authorized and allows state and local government to protect scattered assets and reduce technical debt.

## Adopt a Whole-of-State Cybersecurity Strategy With Armis Centrix™

The whole-of-state cybersecurity strategy strives to enhance defenses across all public sector agencies and departments by dismantling government silos. It promotes collaboration among entities to share cybersecurity resources and information, ultimately bolstering their collective cybersecurity stance. Armis Centrix™ delivers a whole-of-state approach with a flexible, cost-effective platform that gives both large agencies and small municipalities shared insights, leading to reduced tech debt and more efficient services for their staff and constituents. Armis Centrix™ can be deployed with or without agents, based on customer requirements. The flexible platform offers both smart active querying as well as passive detection.

## Flexible Platform Designed To Address Expanding Attack Surface

Powered by our AI-driven Asset Intelligence Engine, Armis sees your entire attack surface holistically. Through telemetry data and deep packet inspection, active querying, integrations with your existing solutions, active discovery and collective intelligence gathered from our extensive multibillion asset engine. Now you can:



### See

Discover, contextualize, enrich and profile every asset



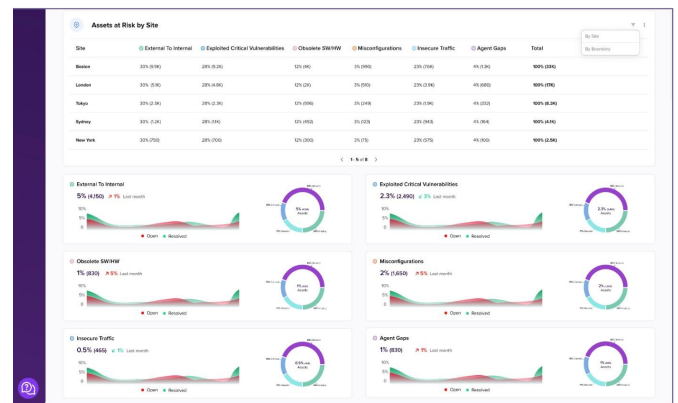
### Protect

Take measures and prioritize efforts against all exposures



### Manage

Establish workflows and track risk reduction



## Supercharge your Infrastructure with a Whole-of-State Cybersecurity Strategy Provided by Armis:

### Complete Asset Visibility

Armis Centrix™ uses a holistic asset discovery approach to gather deep knowledge and context of all assets without risk to uptime. Creating complete visibility with insights to reduce risk exposure and empower intelligent actions to mitigate risk is absolutely essential in state and local government environments.

### Asset Management and Security

Utilizing a whole-of-state approach with a flexible, cost-effective platform gives state and local governments of all sizes shared insights, leading to reduced tech debt and more efficient security operations.

### Asset Intelligence Engine

AI-powered Asset Intelligence Engine monitors billions of assets world-wide in order to identify cyber risk patterns and behaviors.

### Consistent Governance

Collaborative insight across governments employs interconnectivity of threats to mitigate risk.

### Vulnerability Prioritization and Remediation

With high volumes of assets scattered across state and local infrastructure, governments need an end-to-end solution that hooks into their existing workflow to calculate risk scores – creating operational efficiencies to tackle incident response despite headcount or budget issues.

### Early Warning Detection

For state and local governments, data breach incidents can be extremely costly. It is critical to identify compromised devices that are connected to the network to prevent spreading or exploitation. Utilizing early warning detection systems can preempt vulnerabilities before they are announced.



## Key features that make Armis the go-to platform for total exposure management.

- Whole-of-state** approach with a flexible, cost-effective platform.
- Full asset inventory** and CMBD enrichment, providing complete asset visibility across all asset types, including IT, IoT, OT, IoMT, cloud, and cellular-IoT, whether managed or unmanaged..
- Create an up-to-date inventory** of which applications are deployed on which assets.
- Create policies and queries** that highlight boundary violations, then automate your segmentation processes with intelligent recommendations.
- Pool resources and share information across agencies** to maximize funding and drive support.
- Adhere to regulatory compliance guidelines** when benefiting from state and local funding and grant programs.
- Identify any abnormal or risky activity** with network baseline rules.
- Monitor connectivity and track asset behavior.** Create a real-time network baseline.
- Monitor and audit changes** of ICS assets.
- Track and report** on errors produced by ICS assets and misconfigured ICS assets.
- Smart Active Querying** to safely deep dive into asset visibility through smart querying.
- Actionable Threat Intelligence** including early warning detection to act on a vulnerability before it is published and preempt an attack before it occurs.



## Why State and Local Governments Trust Armis to Deliver Better Outcomes

- 1** ROI with time-to-value for strapped IT teams with hundreds of integrations to your existing technology vendors.
- 2** Cyber resilience with complete asset discovery ensures visibility of all assets connected into your organization.
- 3** Future-Proofed cybersecurity with Armis, organizations are ready for future digitalization.
- 4** Operational resilience with Armis for State and Local Governments, reducing ransomware attacks on their networks.
- 5** Compliance and safety across the entire production process in manufacturing and critical Infrastructure.
- 6** Reputation and trust. Districts using Armis for Education are industry leaders upholding best cybersecurity practices.
- 7** Speed of Deployment is critical in manufacturing where quick resolution and reduction of risk is a high priority.

