



CASE STUDY

Armis helps law enforcement IT department carry out its mission to safeguard citizen data

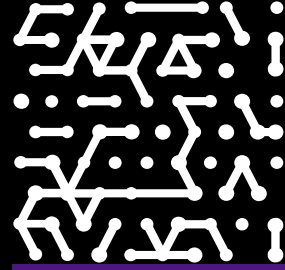
2nd Largest Sheriff's Office in Florida Closes Critical Gaps in Asset Visibility and Gains Comprehensive View of Their Vulnerability, Threat, and Risk Posture.

Industry

Local government & law enforcement

IT environment

Over 3,000 employees and an environment consisting of managed and unmanaged devices



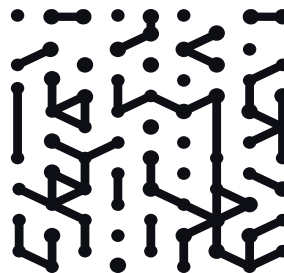
Introduction

The Hillsborough County Sheriff's Office in the Tampa Bay area had a good handle on their managed assets but lacked visibility into unmanaged assets, network traffic, and device communication. Armis provided the IT team with 100% visibility into assets, along with the ability to track device behavior, uncover potential threats, and take appropriate measures to resolve the most relevant issues. In addition, the single, centralized Armis dashboard has been an important tool to support transparency and accountability. Not only can the law enforcement IT team continually monitor and stay on top of any potential issues, the user-friendly dashboard also provides local government administrators with a firsthand view into the risk posture of the digital environment. This has fostered greater trust and cooperation among these government entities.

Established in 1845, Hillsborough County Sheriff's Office (HCSO) provides law enforcement services for the 888 square miles that span the unincorporated area of Hillsborough County in the Tampa Bay region of western Florida. HCSO's mission is to "serve, protect, and defend the community while preserving the rights and dignity of all." As CIO Todd Ryan points out, this includes ensuring the security and privacy of the information on the county's approximately 1.44 million residents.

Ryan has always run a tight ship, remarking that he was "100% confident" about the managed devices on the network. He and his team had checked all the boxes. But, recently, they realized they had no way of knowing where a user might have unplugged their agency-issued computer or connected to the network with an unmanaged device from home.

"While we had complete confidence in what we could control, we were blind to what we did not know," said Ryan. Using a law enforcement analogy, he pointed out that all law enforcement recruits go through a rigorous screening process—including a background check—before they are issued a badge or a gun. And while an agency has complete confidence in their fully vetted employees, if an impostor dressed in law enforcement uniform and with a fake ID were to walk in the front door, some agencies may have no way of knowing that.



Armis provides immediate value and an abundance of insights

With this in mind, Ryan and his team deployed Armis and, within a short period time, they had more visibility than ever before into the devices on the network. “From the moment we plugged in the first Armis collector to the moment we got actionable value, it was under 24 hours,” remarked Ryan.

Armis uses agentless monitoring of traffic to collect data on devices and device activity with zero impact on network performance. It detects behavioral anomalies or traffic patterns that could indicate a potential threat or vulnerabilities.

“We are now trying to sort out all the information Armis provides and working on how to mitigate issues,” said Ryan. “It’s like being led blindfold into a big room and having the blindfold yanked off of you. It takes a while to adjust your eyes and take everything in. We are seeing things we were not aware of before. We’re sifting through and filtering the knowledge we have from Armis and are trying to determine how much of it is relevant.”

In the early stages of HCSO’s relationship, the Armis team asked Ryan and his team how many devices they thought were on HCSO’s network. “We found at least five times what we guessed was on the network—and I was guessing high. I am confident that 100% of organizations that are not running Armis would be off by an order of magnitude if you asked how many devices are on their network,” he asserted.

Attentive support from Armis throughout the sales and deployment cycle

At times, local government agencies like HCSO run into issues around adopting a new technology, as many vendors have a long deployment timeline—sometimes as much as 12 months or more. Ryan appreciates how quick and easy it was to deploy the Armis platform.

“From pre-sales to deployment, we had an authoritative, expert-guided experience—from account management to professional services. Our account manager knows the product inside and out and helped us structure our queries,” said Ryan. “There was never a moment that we had to wait for Armis.”

Challenges

- Creating an accurate asset inventory
- Increasing visibility to connected devices and their activities
- Determining what issues need the most attention

Armis provides intelligence that informs mitigation efforts

According to Ryan, Armis confirmed some things his team had already suspected, and it also surfaced things they were not aware of, such as unusual traffic patterns.

“Armis is much more than an asset inventory tool. It has multiple dimensions to it. We found that Armis can map network traffic between applications and devices and has the ability to pivot and see communication between devices. Armis interacts with the entire technology stack,” noted Ryan.

The IT leader and his team are leveraging Armis to discover what they need to pay attention to and are developing action plans to mitigate issues and triage them. In addition, Ryan and his team have been actively completing integrations across all the tools they have in their architecture. As Ryan said, “Why wouldn’t we integrate Armis with everything?”

Armis helps build trust between government administrators and IT

One of the motivations for implementing Armis was to alleviate the fear, uncertainty, and doubt (FUD) factor. Ryan noted that local government agencies have a responsibility to the public to know what’s on their network, as they will be held accountable should any cybersecurity issues arise. “The answer for every government entity should be: ‘Yes, we have to know, and we have to keep knowing that we know every day,’” said Ryan.

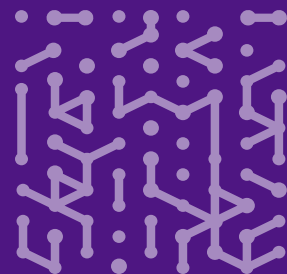
As Ryan pointed out, it’s also essential for county or city administrators and IT to cultivate a relationship based on trust—and Armis contributes to that effort. Armis’s single, centralized dashboard is customizable and easy to use, allowing both technical and non-technical users to gain real-time insights into network activity and devices.

“Armis is much more than an asset inventory tool. It has multiple dimensions to it. We found that Armis can map network traffic between applications and devices and has the ability to pivot and see communication between devices. Armis interacts with the entire technology stack.”

Todd Ryan

CIO

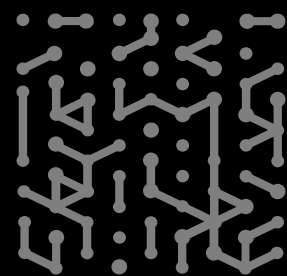
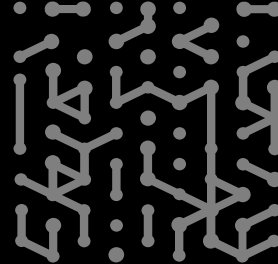
Hillsborough County Sheriff’s Office



“Visibility and transparency builds trust. If I were a city or county manager, I want to be able to trust my IT director when he tells me there are only three Windows XP machines and no Window 7 machines on the network. Armis makes it easy for administrators to look at the dashboard and confirm what IT is telling them, as they are ultimately accountable,” affirmed Ryan. “Any IT person worth their salt would welcome the ability of executives to validate what they are saying and build trust on top of that.”

Armis Results

- Offers 100% visibility to all managed and unmanaged devices connecting to the network
- Provides extensive, detailed, and actionable data to help with remediation and triage
- Surfaces unusual traffic and anomalous device behavior
- Supports accountability and helps build trust by determining the efficacy of security processes



Armis, the asset intelligence cybersecurity company, protects the entire attack surface and manages the organization's cyber risk exposure in real time.

In a rapidly evolving, perimeter-less world Armis ensures that organizations continuously see, secure, protect and manage all critical assets.

Armis secures Fortune 100, 200 and 500 companies as well as national governments, state and local entities to help keep critical infrastructure, economies and society safe and secure 24/7.

Armis is a privately held company headquartered in California.

1.888.452.4011

Website

Platform
Industries
Solutions
Resources
Blog

Try Armis

Demo
Free Trial

